

REQUEST FOR PROPOSAL

BID NUMBER: 2007-25

STATE OF CONNECTICUT
 ENVIRONMENTAL PROTECTION
 141 SOUTH ST., UNIT D
 WEST HARTFORD CT 06110-1963
 PHONE: 860-723-7605
 FAX: 860-953-8581

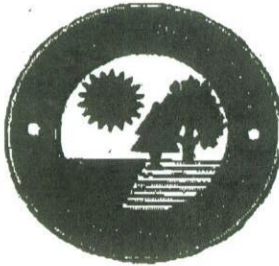
<p><u>Vendor Name & Address:</u></p> <p>Phone: _____ Fax: _____</p>	<p><u>WORK PERFORMED AT:</u></p> <p>Talcott Mountain State Park Montevideo Rd (off Rte 44) Avon CT</p>
--	--

DATE ISSUED	ISSUED BY Mel Carmichael	DATE/TIME BID REQUIRED 4-7-08 11 AM EST	DATE WORK REQUIRED	F.O.B.	TERMS
3-20-08	Please return bid to Fax: 860-953-8581	SEE INSTRUCTIONS BELOW	1 WEEK A.R.O.	ALL PRICES MUST BE F.O.B. DESTINATION	Net 45 days

ITEM NO.	DESCRIPTION	UNIT	QUAN	UNIT PRICE	TOTAL
1	Window replacement at the Heublein Tower				
	Bidders please call Vincent Messino at 860-242-1158 for directions and arrangements to view the job site				
				Total-->	

NOTE: DO NOT INCLUDE FEDERAL EXCISE TAXES OR CONNECTICUT SALES TAX, AS THE STATE IS EXEMPT.
 BIDDER INSTRUCTIONS: PLEASE FAX YOUR QUOTE ON THIS FORM TO (860) 953-8581 AND MAIL FORM WITH ORIGINAL SIGNATURE TO THE ADDRESS IN THE UPPER RIGHT HAND CORNER. ALL PRICES MUST BE F.O.B. DESTINATION AND YOU MUST SIGN THIS FORM. THE STATE RESERVES THE RIGHT TO REJECT IN WHOLE OR IN PART ANY AND ALL BIDS. PLEASE NOTE BID DEADLINE. LATE BIDS WILL NOT BE ACCEPTED. THE UNDERSIGNED BIDDER AFFIRMS AND DECLARES: THAT THIS QUOTATION IS EXECUTED AND SIGNED BY SAID BIDDER WITH FULL KNOWLEDGE AND ACCEPTANCE OF THE PROVISIONS OF FORM SP-19 OF CURRENT ISSUE AND IN EFFECT ON THE DATE OF THIS BID ISSUE. FORM SP-19, ENTITLED STANDARD BID AND CONTRACT TERMS AND CONDITIONS TOGETHER WITH THE COMMODITY SPECIFICATIONS, PROPOSAL SCHEDULE, AND SPECIAL BID AND CONTRACT TERMS ARE MADE A PART OF THIS REQUEST FOR QUOTATION.

QUOTATION NO.	DATE :	VENDOR FEIN/SSN :	ARE YOU INCORPORATED? YES NO	DELIVERY AS REQ=D ABOVE (UNLESS NOTED HERE)
SIGNED :	TITLE :	TELEPHONE NO. AND EXTENSION :	CASH DISCOUNT: PAYMENT TERMS:	
PRINTED :			% DAYS NET 45	



**DEP-STATE PARKS DIVISION
NOVEMBER 26, 2007**

HEUBLEIN TOWER WINDOW REPLACEMENT SPECIFICATIONS

LOCATION:

Talcott Mountain State Park, Montevideo Road (off of Route 44), Avon

AGENCY CONTACT:

Park Supervisor, Vincent Messino (860) 242-1158.

DESCRIPTION:

Remove and replace three window assemblies in sun porch of Heublein Tower, Talcott Mountain State Park, Simsbury, CT. (See attached photograph) Full replacement including frame, sash to match original in material, style and profile. Each window/door assembly to be comprised of four components: in-swinging door, two side lights and a roundtop window.

DIMENSIONS: (Approximate)

Height of window/door assembly including trim, 8'-9 3/4"''.

Width of window/door assembly including trim, 6'-2 1/2"''.

Window trim width, 4 1/2" x 3/4"''.

Round-top window portion of assembly only, 6'-2 1/2" x 3'-1 1/4"''.

Center door assembly only, 3'-0" x 5'-9"''.

Side light assembly each only, 1'-1 3/8" x 5'-9"''.

Total length of sun porch, 24'-0"''

Total height of sun porch, 11'-9"''

ACCEPTABLE PRODUCT:

Preferred window product would be Green Mountain Window, milestone Series or approved equivalent, submitted product approved by agency contact to match integrity and character of original windows.

INSTALLATION:

Bid to include the removal of the existing window assemblies and complete the installation of the new window/door assemblies by awarded contractor. Contractor's bid price to include erection of staging, disposal of existing window assemblies, any related building flashings, caulking and sealants, temporary window coverings, and any minor carpentry repair for localized rotting if present. All new flashings to be copper.

PRE-BID INSPECTION:

Interested contractors must contact above listed agency contact to arrange for pre-bid site inspection to familiarize themselves with existing conditions and desired finish product.

BID PROCEDURE:

Provide lump sum bid for all specified work.

BID ADDENDUM:

Lead Paint and Asbestos – Containing Materials Disclosure.

Subsequent to previous invitation to bid, testing was performed on existing subject windows for lead paint and asbestos.

- A. Trace amounts of asbestos were detected in the following areas of all three windows assemblies:
 - 1. All exterior glazing on window sash.
 - 2. Caulking at lower window base panels and flashing.
- B. Lead paint was detected on all interior/exterior sills, sash, casings and trim.

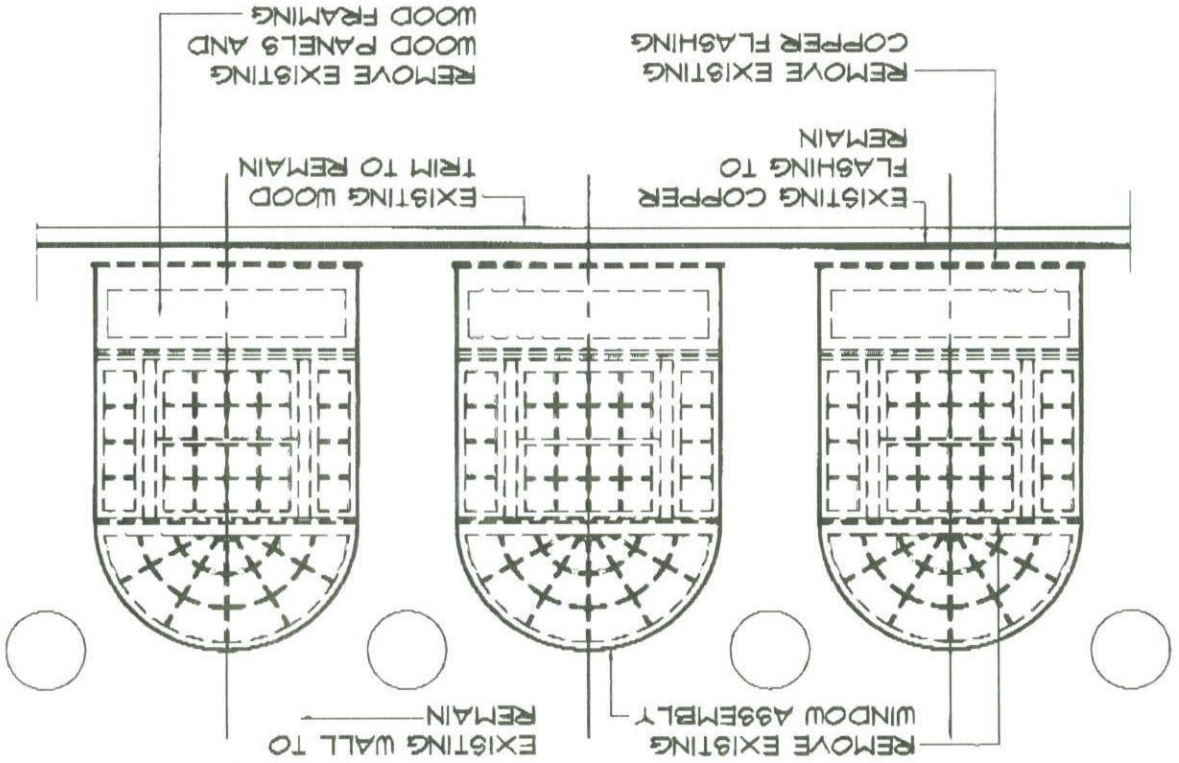
Project is being re-bid with further contractor requirements:

- A. The removal of three existing window assemblies shall be performed by a contractor certified in the removal of lead paint.
- B. All removal work shall be conducted in accordance with OSHA regulations, utilizing engineering controls and personal protective equipment.
- C. All disposal of lead base painted woodwork shall be in accordance with CTDEP Hazardous & Special Waste Management and USEPA RCRA Hazardous Waste Management.
- D. Contractor is not responsible for asbestos abatement or disposal.
 - 1. The contractor as part of this bid is required to dismantle and remove various double hung window sash, fixed side lights and round-top windows and caulking affixed between lower panel to flashing containing trace asbestos.

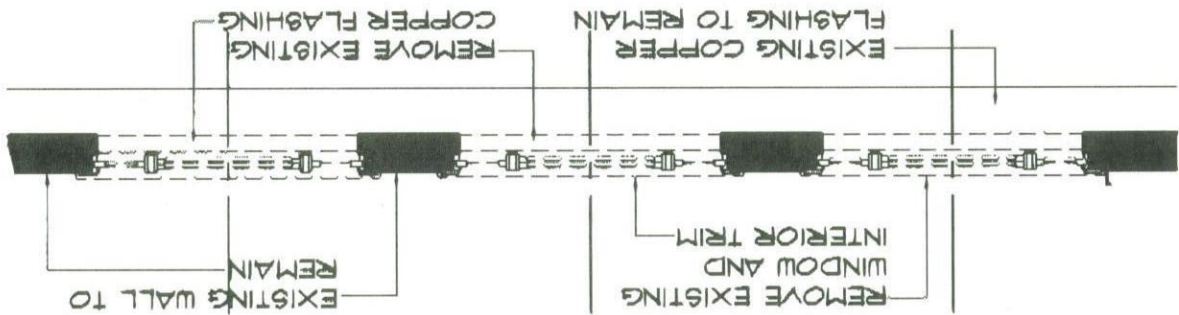
2. Contractor shall be required to wrap/seal these removed items in 6 mil protective plastic.
 3. The agency will assume responsibility for the temporary storage of this material for disposal under separate contractor.
- E. Contractor shall only be responsible for the safe/proper disposal of all other lead paint surface woodwork (i.e. sills, nails, casings, trim).
- F. Agency can provide detailed results of survey to awarded contractor if necessary.

THESE DRAWINGS, THE DESIGN AND THE WORK PRODUCT THEY REPRESENT ARE THE EXCLUSIVE PROPERTY OF JAY T. WILBERUP, ARCHITECT AND ARE NOT TO BE REPRODUCED OR USED FOR DESIGN OR CONSTRUCTION WITHOUT THE EXPRESS WRITTEN AUTHORIZATION OF JAY T. WILBERUP

D-12 DEMOLITION - EXTERIOR ELEVATION -
SCALE: 1/4" = 1'-0"



D-11 DEMOLITION - PLAN
SCALE: 1/4" = 1'-0"



STATE OF CONNECTICUT - DEP
STATE PARKS DIVISION - TALCOTT MOUNTAIN STATE PARK
HEUBLEIN TOWER - MONTVEDE ROAD - AVON, CT
DEMOLITION - EXTERIOR ELEVATION PLAN

REV.

DATE

28 NOV 2007

ORIS

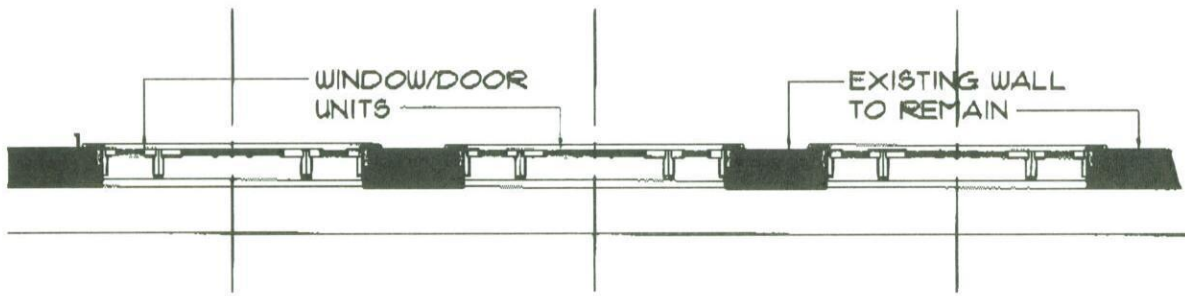
2007-05

DRN.

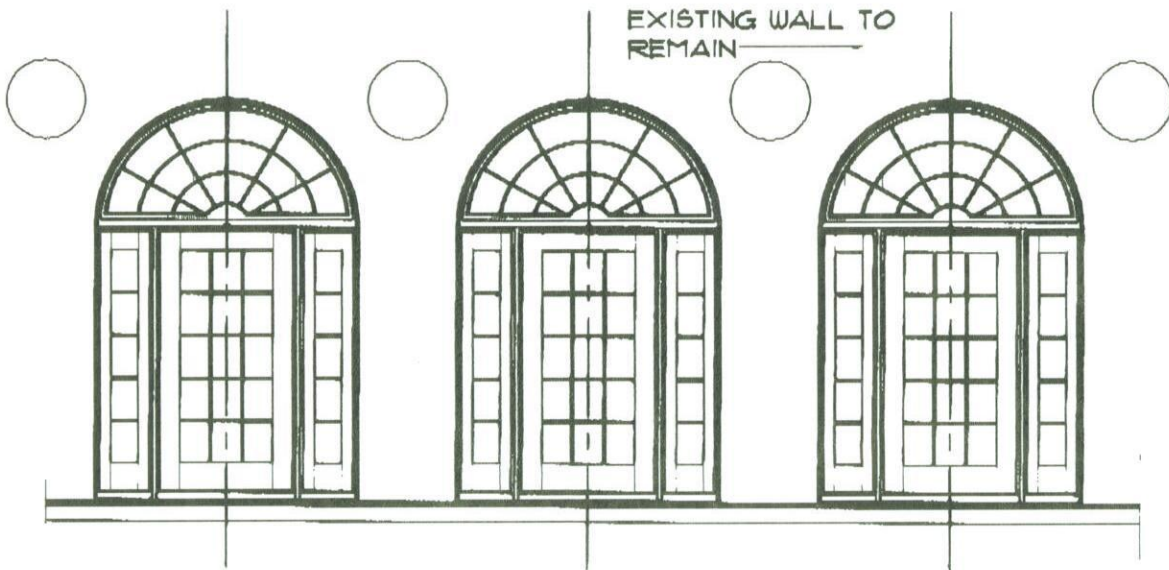
JTW

JAY T. WILBERUP
ARCHITECT
17 FIRETOWN ROAD
STIMSBURY, CONNECTICUT
ARCHITECTS, INC. (SINCE 2007) 860-261-1111

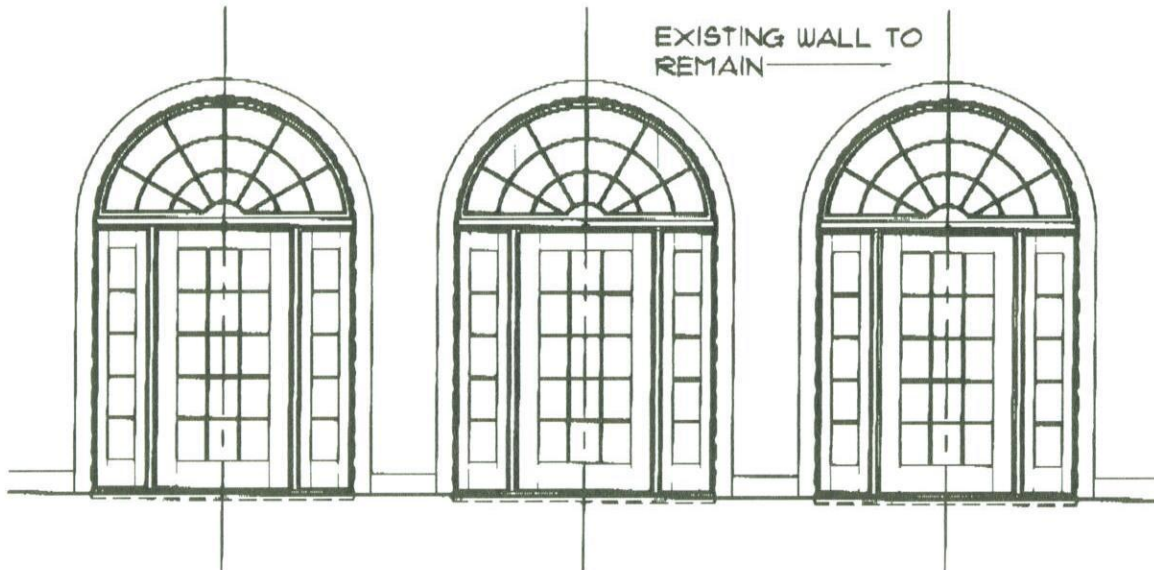
THESE DRAWINGS, THE DESIGN AND THE WORK PRODUCT THEY REFLECT ARE THE EXCLUSIVE PROPERTY OF JAY T. WILLERUP, ARCHITECT AND ARE NOT TO BE REPRODUCED OR USED FOR DESIGN OR CONSTRUCTION WITHOUT THE EXPRESS WRITTEN AUTHORIZATION OF JAY T. WILLERUP



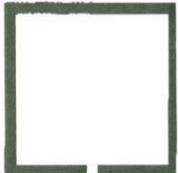
A-1.1 PLAN
SCALE: 1/4" = 1'-0"



A-1.2 EXTERIOR ELEVATION
SCALE: 1/4" = 1'-0"



A-1.3 INTERIOR ELEVATION
SCALE: 1/4" = 1'-0"



JAY T. WILLERUP
ARCHITECT
17 FIRETOWN ROAD
SIMSBURY CONNECTICUT
06069-1111 TEL: 860.261.0101 FAX: 860.261.0101

DRN. JTW

OPUS 2007-05

DATE 8 NOV 2007

REV



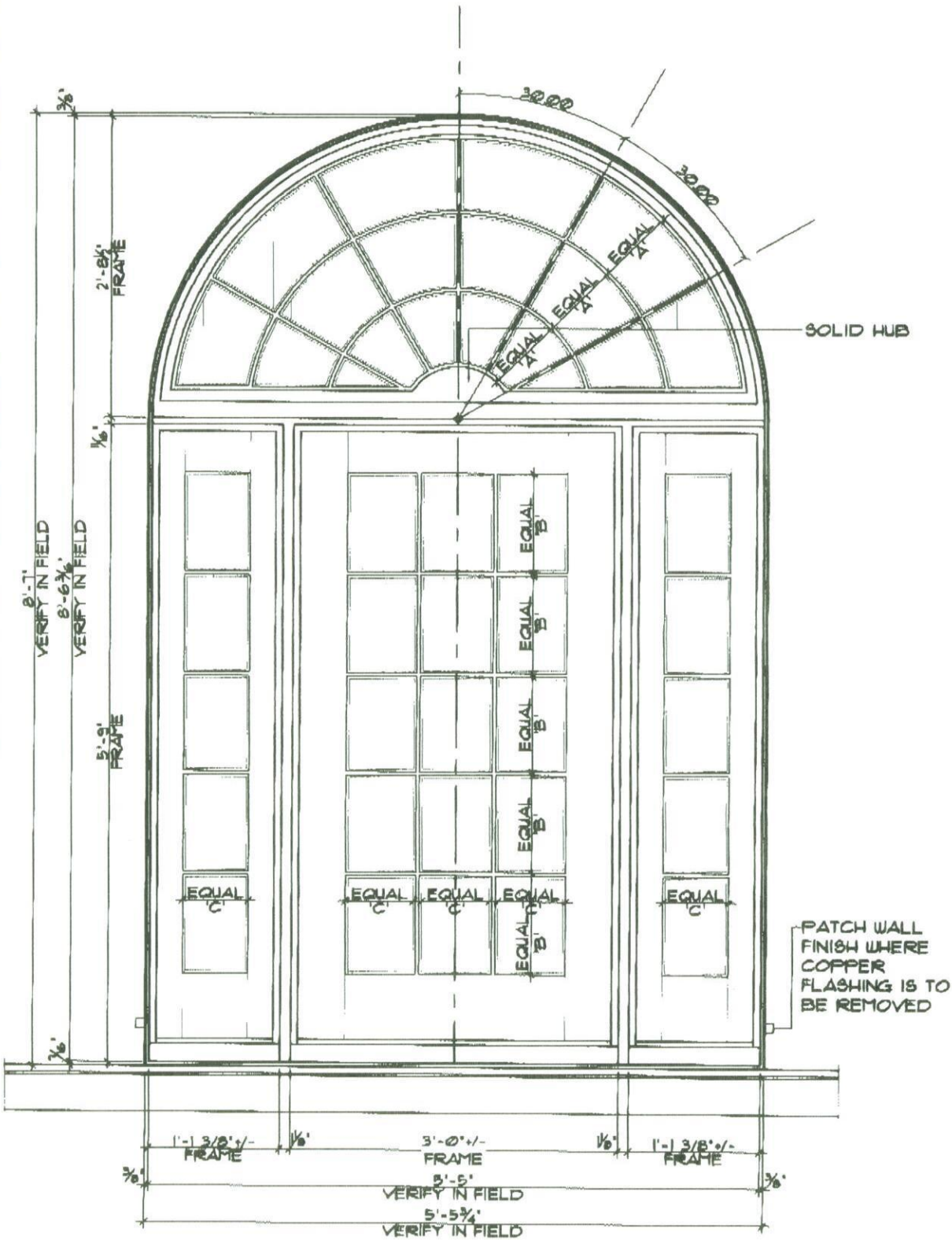
STATE OF CONNECTICUT - DEP
STATE PARKS & RECREATION - TALCOTT MOUNTAIN STATE PARK
HEUBLEIN TOWER - MORTVEDDED ROAD - AVON, CT

EXTERIOR ELEVATION
INTERIOR ELEVATION



A-1

THESE DRAWINGS, THE DESIGN AND THE WORK PRODUCT THEY REFLECT ARE THE EXCLUSIVE PROPERTY OF JAY T. WILLERUP, ARCHITECT AND ARE NOT TO BE REPRODUCED OR USED FOR DESIGN OR CONSTRUCTION WITHOUT THE EXPRESS WRITTEN AUTHORIZATION OF JAY T. WILLERUP



A-2.1 EXTERIOR ELEVATION
SCALE: 3/4" = 1'-0"

JAY T. WILLERUP
ARCHITECT
17 FIRETOWN ROAD
SIMSBURY, CONNECTICUT
06068-1411 FAX 860-251-7431 jtw@jtwllr.com

DRN. JTW

OPUS 2007-05

DATE 26 NOV 2007

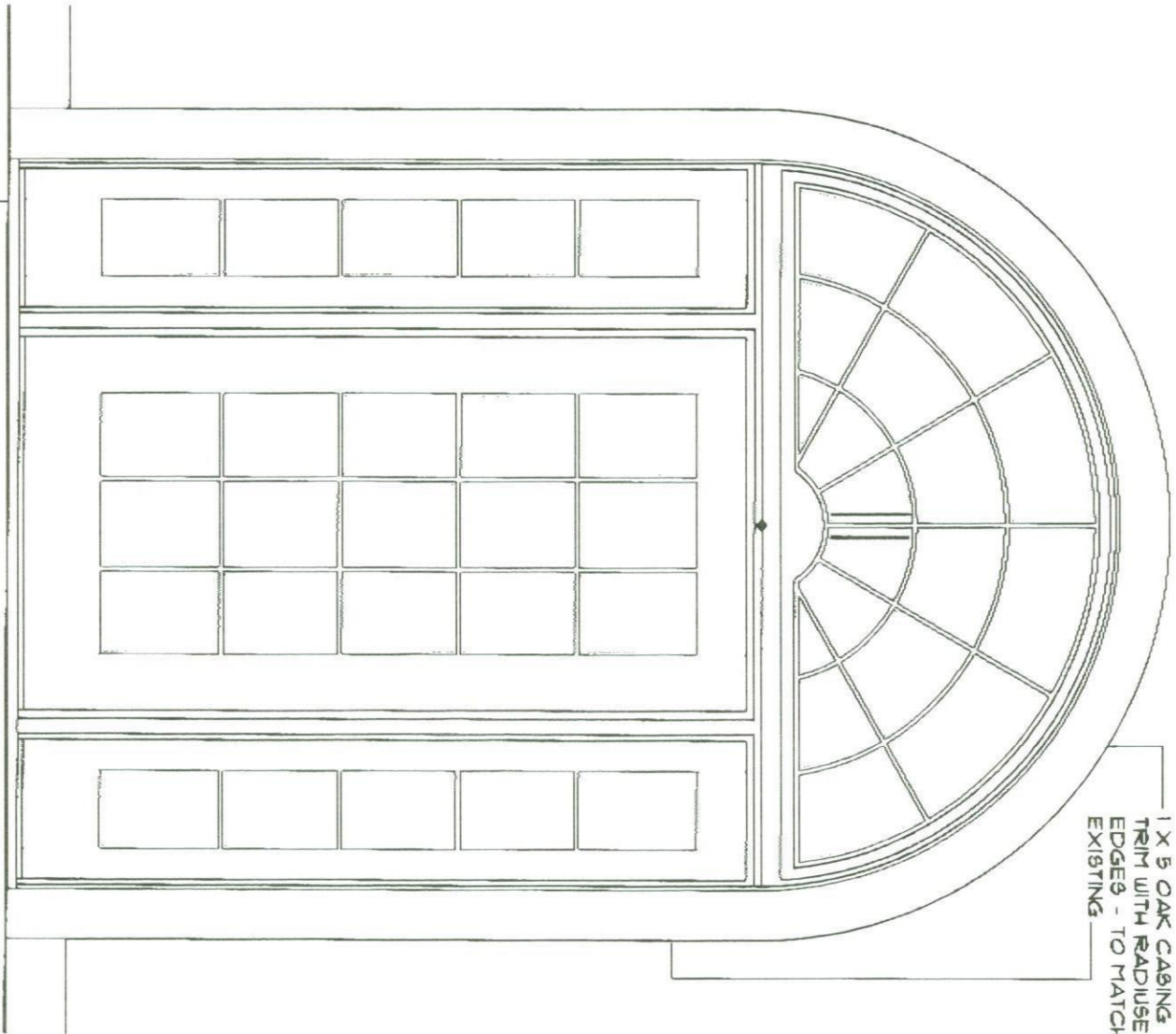
REV.

STATE OF CONNECTICUT - DEEP
STATE PARKS DIVISION - TALLOTT MOUNTAIN STATE PARK
HEITREIN TOWER - MONTEVELO ROAD - AVON, CT

EXTERIOR ELEVATION

A-2

THESE DRAWINGS, THE DESIGN AND THE WORK PRODUCT THEY REFLECT ARE THE EXCLUSIVE PROPERTY OF JAY T. WILLERUP, ARCHITECT AND ARE NOT TO BE REPRODUCED OR USED FOR DESIGN OR CONSTRUCTION WITHOUT THE EXPRESS WRITTEN AUTHORIZATION OF JAY T. WILLERUP



5/4 X OAK SILL TRIM
WITH RADIUSED EDGES -
TO MATCH STAIR
TREADS

1 X 5 OAK CASING
TRIM WITH RADIUSED
EDGES - TO MATCH
EXISTING

A-3.1 INTERIOR ELEVATION
SCALE, 3/4" = 1'-0"

A-3	STATE OF CONNECTICUT - DEP STATE PARKS DIVISION - TALCOTT MOUNTAIN STATE PARK HEUBLEIN TOWER - MONTEVIDEO ROAD - AVON, CT	REV.	DATE 26 NOV 2007	OPUS 2007-05	DRN. JTW	JAY T. WILLERUP ARCHITECTURAL CONSULTANTS 17 FIRETOWN ROAD SIMSBURY CONNECTICUT PHONE: 860.261.9300 FAX: 860.261.9301 E-MAIL: jtw@willerup.com	
	INTERIOR ELEVATION						