



PROCUREMENT SERVICES

ADDENDA

Date	May 15	2009
Addenda Number	#1	

REQUEST FOR PROPOSALS FOR FIRE HOUSE IMPROVEMENTS, PHASE III, ENGINE COMPANY NO. 14, 25 BLUE HILLS AVENUE, HARTFORD, CT		
RFR NUMBER	BID NO 4421	DPW F03-09D
DUE DATE	2:00 PM	BIDDATE May 21, 2009

This Addendum is a contract document modifying previously issued documents, which remain in full force except as specifically modified below.

Quotations appearing on the Proposal are to reflect the provisions of this Addendum. Failure to acknowledge receipt of this Addendum in the space provided on the response sheet may subject candidate to disqualification.

ADDENDUM NO. 1

To become part of the Bidding Documents (drawings and specifications) for the project:

**FIREHOUSE IMPROVEMENTS
PHASE III, ENGINE COMPANY NO.14
25 Blue Hills Avenue, Hartford, CT**

Bid submission deadline remains unchanged.

NOTE:

Please acknowledge in appropriate place in BID RESPONSE FORM. Interpretations, corrections and changes of the bidding document made in a manner other than by Addendum will not be binding and the bidders shall not rely upon them. This Addendum supersedes all other written or verbal clarifications provided to the bidders before the date of this Addendum.

GENERAL:

1. Specification Section 105113 METAL FOOD LOCKERS enclosed with this Addendum
2. SK-1 and SK-2 enclosed with this Addendum

SPECIFICATIONS:

Division 2 – SURVEY FOR ACM & LEAD BASED PAINT

1. The purpose for including this report is to make the bidders aware that there is a small amount of ACM in the Hot Water Heater. No work is being done under this Bid to the H.W.H. See Article 4.3 RECOMMENDATIONS on Page 6 for all bidders to become aware of the presence of ACM and lead based paint. The selected Contractor shall comply with the applicable laws to protect construction team. No dollar amount shall be carried in the Base Bid for ACM removal.
2. Based on the testing completed by the Owner's Hazmat Consultant, there is no asbestos in the roofing materials. However, the underlayment under roof shingles was not tested and may contain ACM. The Contractor, shall stop work and notify the Owner immediately if materials suspected ACM are encountered during roof removal.

Section 054000 – COLD FORMED METAL FRAMING

1. Add paragraph 1.5.F to read " Engineering Responsibility: Engage a fabricator who assumes full responsibility for engineering cold formed framing by employing a structural engineer licensed to practice in Connecticut to prepare design calculations, design documents, shop drawings and other required structural data. However for the purpose of bidding use 10" C-Joists.

Section 074219 –METAL PLATE WALL PANEL

1. Go by the technical specification and Detail 7/A-5. Delete reference to "Shingle style flat seam brushed s.s. or zinc sheets" on Drawing A-4.

Section 075323 –EPDM ROOFING

1. 90 mil black membrane is acceptable.

Section 095113 –ACOUSTICAL PANEL CEILING

1. Change paragraph 2.2.B.1. Products to read "2x2 and 2x4 ceiling tiles shall be 5/8" thick Cortega Square Lay-In non fire rated ceiling tiles as manufactured by Armstrong World Industries or an approved equal"

DRAWINGS:

Cover Sheet:

1. Delete Keynote 9.4.

Drawing A-1:

1. The intent of Note 8.1 is to have the Contractor do a proper "prep" before painting. Alternate method will be reviewed on a case by case basis.
2. Hardware Specification for Doors # 105a and 204a:

Hinges: 4 1/2"x4 1/2" five knuckles standard wt. or heavy wt.
full mortise for doors 36" wide or less x 1 3/4" thick

Locks & Latch Sets:	Sargent 8200 Series LW1L Design
Door Closer:	Sargent 351 Series
Door Stops & Holders:	Sargent 590 Series
Wall Stops:	Rockwood 409 Series
Floor Stops:	Rockwood 440 or 442
Kick Plates:	18 Ga Aluminum Beveled Edges
Silencers:	Rockwood 608
Finish:	Match Existing

3. Shower door replacement is not included in contract. Replace toilet compartment doors as shown.

Drawing A-2:

1. Ceiling finish shall be as shown on 2/A-2. Disregard conflict with Room Finish Schedule.
2. Ceiling finish in stairwell shall be replaced with new of the same kind.
3. Existing hard ceiling is not to be removed and replaced with new suspend acoustic ceiling. Only existing suspended acoustic ceiling shall be replaced with new acoustical ceiling and suspension at the same height as existing.
4. Provide plastic laminate bull-nose radius edge at counter tops as shown on Details 15/A-2 and 16/A-2.

Drawing A-5:

1. Trim board shown behind gutter shall be 1" thick pre-finished smooth cement fiber board as manufactured by James Hardie or an approved equal. Color shall be as selected by the Architect from the full range available from the manufacturer.
2. Disregard the anchor between beam and the fascia board. Provide anchor between beam and the top of existing to remain brick veneer.

Drawing ME-1:

1. In drawing ME-1, First And Second Floor Mech. & Electrical Plans, Dated 4/28/09. **REVISED** the drawing to add seven (7) GFCI, Weather Proof (WP) receptacle at roof for heat tracing of seven (7) downspout. All receptacles shall be circuited together to a 20A-1p breaker in existing panel EP2. Provide 20A, 1P breaker. Coordinate Exact downspout locations with Plumbing and Architectural drawings
2. In drawing ME-1, First And Second Floor Mech. & Electrical Plans, Dated 4/28/09. **REVISED** drawing to add one GFCI, Weather Proof (WP) receptacle at roof for gutter heat tracing. Receptacle shall be located near the beginning of the new gutter (near column A-2). Receptacle shall be circuited to a 20A, 1P circuit breaker in existing panel EP2. Provide 20A, 1P breaker. Coordinate exact gutter location with architectural drawings.

Drawing MEP-1:

1. In Plumbing Specifications, add note #24 to read as follows: Roof Drain, JR Smith Model # 1010, provide with vandal-proof cast iron dome, under deck clamp and sump receiver, size to match existing.
2. In Plumbing Specifications, add note #25 to read as follows: Provide new heat trace cabling at all new gutter systems and downspouts at building

exterior, refer to Architectural and Plumbing drawings for all gutter and down spout locations. Heat trace cable, Raychem Winter-Guard H908, 120v, self regulating, plug-in connection, maximum length per circuit shall be 250 feet, 16 gauge, nickel plated copper conductor, thermoplastic elastomer inner jacket, metallic over-braid and thermoplastic outer jacket, 3 watts per foot, UL listed. Install as required by all of the manufacturers written installation instructions.

Drawing PFP-1:

1. On floor plan #2, Second Floor Plumbing Demolition, remove four (4) roof drains on flat section of existing roof, maintain the existing storm piping below roof for new connection. Refer to Architectural roof plans for locations of drains.
2. On floor plan #4, Second Floor Plumbing New Work, install four (4) new roof drains in location of removed roof drains, connect to the existing storm piping below roof, drains shall match size of existing storm piping. Refer to Architectural roof plans for locations of drains.

ATTACHMENTS TO ADDENDUM:

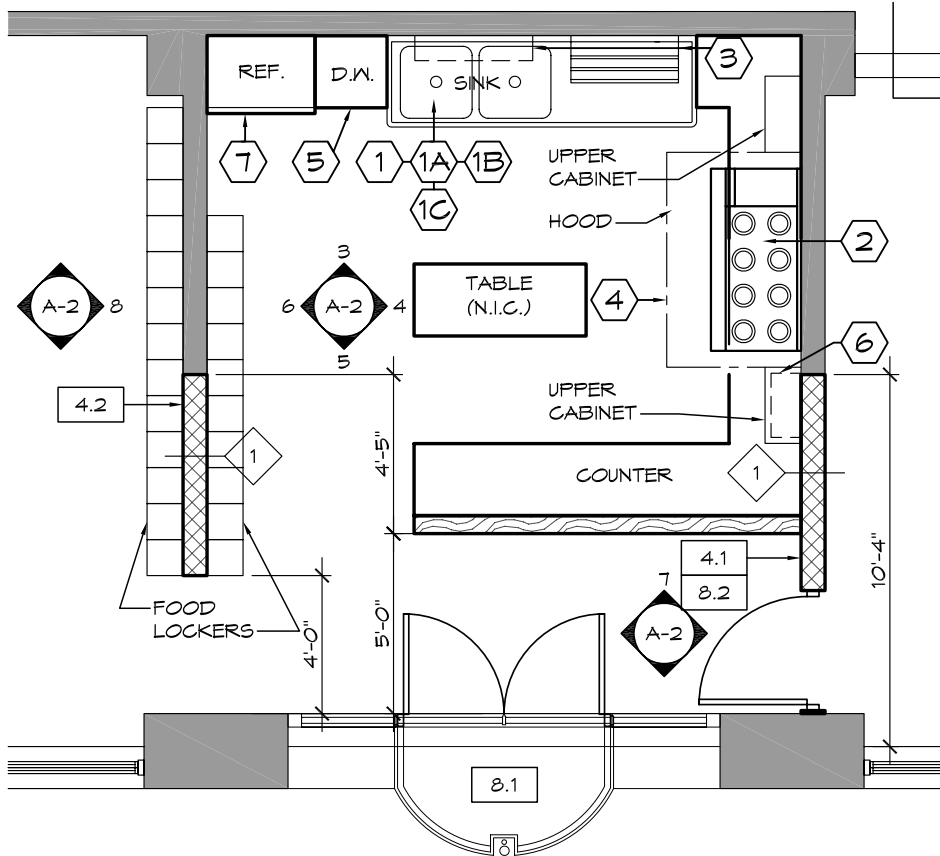
1. Drawing SK-1: Partial Floor Plan – Kitchen (1 page)
2. Drawing SK-2: Roof Plan (1 page)
3. Specification Section: 105110: Metal Food Lockers (4 pages)

EQUIPMENT SCHEDULE

ITEM NO.	QTY	EQUIPMENT CATEGORY	MANUFACTURER	MODEL NUMBER	HOT WATER SIZE (IN)	COLD WATER SIZE (IN)	DIRECT DRAIN SIZE (IN)	INDIR. DRAIN SIZE (IN)	GAS SIZE (IN)	MBTUH	HP	KW	VOLTS	PHASE	AMPS	EQUIPMENT REMARKS
1	1	SINK, SCULLERY, 2 COMPARTMENTS	ADVANCE TABCO	93-42-48-36R	1/2	1/2	1-1/2									
1-A	1	PRE-RINSE FAUCET, WALL MOUNT	FISHER	34479												
1-B	1	TABLE, WORK	ADVANCE TABCO	VKS-308	1/2	1/2	1-1/2									
1-C	1	DISPOSER	IN-SINK-ERATOR	SS-50-5-MRS		1/2	1-1/2				1/2		120		8.4	
2	1	RANGE, RESIDENTIAL, GAS	IMPERIAL RANGE	IDR-8-G12					3/4	165			120	1	1.0	W/C+P NEMA 5-15P
3	2	SHELF, WALL MOUNT, DRAINAGE	ADVANCE TABCO	DT-6R-48												VERIFY IN FIELD
4	1	EXHAUST HOOD	SEE MECH. DRWG.	CUSTOM									120			SEE NOTE #1 BELOW
5	1	DISHWASHER	WHIRLPOOL	DU1055XJSS									120	1		
6	1	FIRE SUPPRESSION SYSTEM	ANSUL	R-102									120			
7	1	REFRIGERATOR														N.I.C.

NOTE #1:

ITEMS 1, 1A, 1B, 1C, 2, 3, 4, 5 & 6 SHALL BE SUPPLIED AND INSTALLED INCLUDING FINAL CONNECTIONS BY KEC. DUCT WORK, FAN, MOTORS & ELECTRICAL CONNECTIONS SHALL BE PROVIDED BY MECHANICAL & ELECTRICAL SUB-CONTRACTORS.



1 PARTIAL FLOOR PLAN - SECOND FLOOR
 SK-1 3/16" = 1'-0"

THE LAWRENCE ASSOCIATES
 ARCHITECTS / PLANNERS, P.C.
 1075 TOLLAND TURNPIKE, MANCHESTER, CT 06042
 FAX: (860) 643-4373 (860) 643-2161

PROJECT NAME & NUMBER
FIRE HOUSE IMPROVEMENTS
ENGINE HOUSE No. 14

Date
 05/14/09

25 BLUE HILLS AVENUE
 HARTFORD, CT

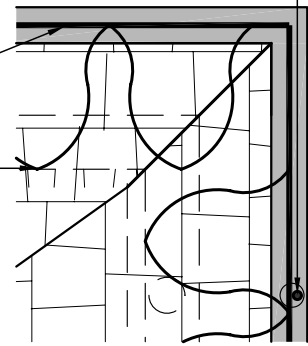
DRAWING TITLE
PARTIAL FLOOR PLAN -
KITCHEN

Drawing Number
SK-1

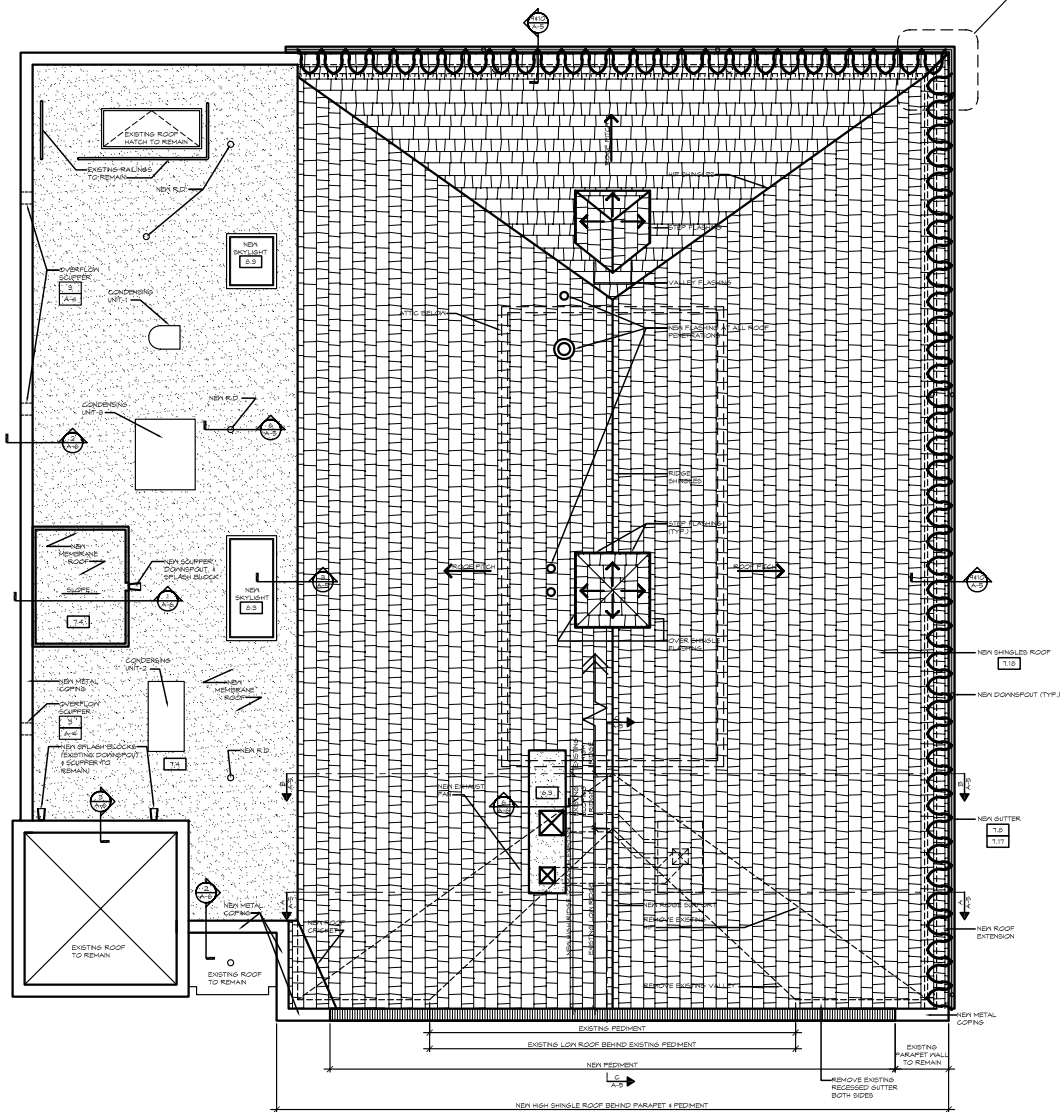
HEATING CABLE IN DOWNSPOUT

HEATING CABLE IN GUTTER

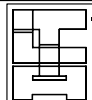
HEATING CABLE OVER GUTTER/ROOF



SCALE: 3/8" = 1'-0"



1 **ROOF PLAN**
 SK-1 1/16" = 1'-0"



THE LAWRENCE ASSOCIATES
 ARCHITECTS / PLANNERS, P.C.
 1075 TOLLAND TURNPIKE, MANCHESTER, CT 06042
 FAX: (860) 643-4313 (860) 643-2161

DRAWING TITLE
ROOF PLAN

PROJECT NAME & NUMBER
**FIRE HOUSE IMPROVEMENTS
 ENGINE HOUSE No. 14**

25 BLUE HILLS AVENUE
 HARTFORD, CT

Date
 05/14/09

Drawing Number
SK-2

SECTION 105110 - METAL FOOD LOCKERS

PART 1 - GENERAL

1.1 RELATED DOCUMENTS

- A. Drawings and general provisions of the Contract, including General and Supplementary Conditions and Division 01 Specification Sections, apply to this Section.

1.2 SUMMARY

- A. Section Includes:
 - 1. Tiered lockers.
- B. Related Section:
 - 1. Division 06 Section "Miscellaneous Carpentry" for wood furring and grounds.

1.3 SUBMITTALS

- A. General: Submit each item in this Article according to the Conditions of the Contract and Division 1 Specification Sections.
- B. Product Data: Manufacturer's printed data including materials, accessories, construction, finishes, assembly, and installation instructions for lockers and benches.
- C. Shop Drawings: Layout and dimensions of metal lockers and benches. Indicate relationship to adjoining surfaces. Show locker elevations and details, fillers, trim, base, sloping tops, and accessories. Include locker numbering sequence. Indicate installation and anchorage requirements.
- D. Samples for Initial Color Selection: Manufacturer's color charts showing a full range of available colors.
- E. Samples for Color Verification: Samples showing actual colors prepared on same material to be used for the Work.
- F. Maintenance Instructions: Instructions for cleaning lockers and for adjusting, repairing, and replacing locker doors and latching mechanisms.

1.4 QUALITY ASSURANCE

- A. Single-Source Responsibility: Obtain locker units and accessories from one manufacturer.

1.5 DELIVERY, STORAGE, AND HANDLING

- A. Do not deliver lockers until spaces to receive them are clean, dry, and ready for locker installation.
- B. Protect lockers from damage during delivery, handling, storage, and installation.
- C. Deliver master keys, control keys and combination control charts to Owner

PART 2 - PRODUCTS

2.1 MANUFACTURERS

- A. Manufacturer: Provide products by one of the following manufacturers:
 - 1. Republic Storage Systems
 - 2. Lyon Metal Products Inc.
 - 3. Penco Products.

2.2 MATERIALS

- A. Steel Sheet: ASTM A 366, commercial-quality, stretcher-leveled, cold-rolled carbon steel sheet, stretcher leveled, free of buckling, scale, and surface imperfections.
- B. Expanded Metal: ASTM F 1267, 0.070-inch- thick minimum, 3/4-inch mesh, flattened carbon steel with at least 70 percent open area..
- C. Hot-Dip Zinc-Coated Steel Sheet: ASTM A 526 commercial-quality, zinc-coated, carbon-steel sheet, hot-dip galvanized according to ASTM A 525 with A 60 or G 60 coating designation.
- D. Fasteners: Zinc- or nickel-plated steel; slotless-type exposed bolt heads; self-locking nuts or lock washers for nuts on moving parts.
- E. Equipment: Manufacturer's standard plated steel hooks or coat rods.

2.3 LOCKERS

- A. Body: Form tops, bottoms, sides, and intermediate partitions of flanged 16 gauge minimum steel sheet. Form backs with 18 gauge minimum steel sheets.
 - 1. Form exposed ends of nonrecessed lockers of 16 gauge minimum steel sheet.
- B. Frames: Form channel frames of 16 gauge minimum steel sheet. Form continuous integral strike on vertical frame members or weld 0.0897-inch minimum latch hooks to latch strike frame.
 - 1. Cross Frames: Form intermediate channel cross frames to double- or triple-tier lockers of 16 gauge minimum steel sheet.
- C. Shelf: Form 0.0239-inch (0.61-mm) minimum steel sheet hat shelf in single-tier units.
- D. Doors: One-piece steel sheet, flanged at all edges, constructed to prevent springing when opening or closing. Fabricate to swing 180 degrees.
 - 1. Thickness: 14 gauge.
- E. Reinforcing: Brace or reinforce inner face of doors over 15 inches wide.
- F. Reinforcing and Sound-Dampening Panels: Brace or reinforce inner face of doors with manufacturer's standard reinforcing angles, channels, or stiffener panels.
- G. Concealed Vents: Provide slotted perforations in top and bottom horizontal return flanges of doors.
- H. Hinges: Steel, full-loop, 5- or 7-knuckle tight pin, 2 inches high minimum. Weld to inside of frame and secure to door with not fewer than 2 factory-installed fasteners that are completely concealed and tamperproof when door is closed.
 - 1. Provide at least 2 hinges for each door 42 inches high or less.
- I. Recessed Handle and Latch: Manufacturers' standard housing to form recess for latch lifter and locking devices; nonprotruding latch lifter containing strike and eye for padlock; and automatic, prelocking, pry-resistant latch mechanism with latching action as follows:
 - 1. Multiple-Tier Lockers: Not less than 2-point latching.
 - a. Size: 15" W x 12" D x 15" H - Each Compartment
- J. Five percent of the total number of lockers shall comply with ADA.

2.4 LOCKER ACCESSORIES

- A. Number Plates: Manufacturer's standard etched, embossed, or stamped, nonferrous-metal number plates with numerals not less than 3/8 inch high. Number lockers in sequence indicated. Attach plates to each locker door, near top, centered, with at least 2 fasteners of same finish as number plate.
- B. Continuously Sloping Tops: Manufacturer's standard continuously sloped top, not less than 0.0359-inch steel sheet. Provide closures at ends and sloped corner fillers.

- C. Filler Panels: 0.0478-inch minimum steel sheet, factory fabricated.
- D. Finished End Panels: Manufacturer's standard 16 gauge minimum steel sheet end-finishing panels to conceal exposed ends of nonrecessed lockers.
- E. Trims: Provide 18 ga recess head trim and recess jamb trims.
- F. Pre-Finished Aluminum Support Angles below.

2.5 FINISHES, GENERAL

- A. Comply with NAAMM "Metal Finishes Manual" for recommendations relative to applying and designating finishes.
- B. Finish all steel surfaces and accessories, except prefinished stainless-steel and chrome-plated surfaces.
- C. Protect mechanical finishes on exposed surfaces from damage by applying strippable, temporary protective covering prior to shipment.
- D. Appearance of Finished Work: Variations in appearance of abutting or adjacent pieces are acceptable if they are within 1/2 of the range of approved samples. Noticeable variations in the same piece are not acceptable. Variations in appearance of other components are acceptable if they are within the range of approved samples and they are assembled or installed to minimize contrast.

2.6 STEEL SHEET FINISHES

- A. Factory finish steel surfaces and accessories except stainless-steel and chrome-plated surfaces.
- B. Powder-Coat Finish: Immediately after cleaning and pretreating, electrostatically apply manufacturer's standard, baked-polymer, thermosetting powder finish. Comply with resin manufacturer's written instructions for application, baking, and minimum dry film thickness.

PART 3 - EXECUTION

3.1 INSTALLATION

- A. Install metal lockers complete with accessories according to manufacturer's recommendations. Install plumb, level, rigid, and flush.
- B. Assemble knock-down lockers with standard fasteners according to manufacturer's recommendations with no exposed fasteners on door faces and face frames.
- C. Anchor lockers to walls at intervals recommended by manufacturer but no greater than 36 inches (910 mm). Install anchors through back-up reinforcing plates where necessary to avoid metal distortion, using concealed fasteners.
- D. Install sloping top units to lockers using concealed fasteners. Provide hairline joints and concealed splice plates.
- E. Install finished end panels to conceal exposed ends of nonrecessed lockers. Retain one of first two paragraphs below. Coordinate with products selected.

3.2 ADJUSTING, CLEANING, AND PROTECTION

- A. Adjust doors and latches to operate easily without binding. Verify that integral locking devices are operating properly.
- B. Clean interior and exposed exterior surfaces and polish stainless-steel and nonferrous metal surfaces.
- C. Protect lockers from damage, abuse, dust, dirt, stain, or paint. Do not permit locker use during construction.

- D. Touch up marred finishes, or replace locker units that cannot be restored to factory-finished appearance. Use only materials and procedures recommended or furnished by locker manufacturer.

END OF SECTION 105110

All remaining specifications, terms and conditions remain the same.

Carita Rozie

Principal Administrative Analyst

End of Addendum #1

Company Name - _____

REQUEST FOR RESPONSE

BID NO: 4421

Department of Public Works Project No: F03-09D



**FIRE HOUSE IMPROVEMENTS,
PHASE III,
ENGINE COMPANY NO. 14,
25 BLUE HILLS AVENUE, HARTFORD, CT**

DEADLINE: 2:00 P.M., Thursday, May 21, 2009

INVITATION TO RESPOND

PROJECT NUMBER:	BIDNO: 4421
CONTRACT NUMBER	F03-09D
DEADLINE :	2:00 PM, MAY 21, 2009
BID TITLE :	FIRE HOUSE IMPROVEMENTS, PHASE III, ENGINE COMPANY NO. 14
SITE LOCATION:	25 BLUE HILLS AVENUE, HARTFORD, CONNECTICUT

The City of Hartford is soliciting proposals for the [Fire House Improvements, Phase III, Engine Company No. 14](#) Project. This Contract is for [site work, demolition, ADA improvements, new interior construction, kitchen, roofing, painting, ceilings, mechanical units, plumbing fixtures, lighting and temperature controls](#).

Below is an outline of some of the requirements that apply specifically to this project. These requirements are discussed in greater detail in Section 8, General Information.

BID INFORMATION (if not attached) is available upon receipt of this invitation over the Internet at <http://www.das.state.ct.us/Purchase/Portal/PortalHome.asp>. Bid documents and drawings associated with this bid, if not included within the bid documents can be viewed at <http://www.merrittgraphics.com/>. Click on the PlanWell link, select "Public PlanRoom", then select this project. Hard copies may be purchased from Merritt Graphics. Fees to purchase sets are non-refundable and will be posted on the site.

Additionally, plans may be ordered by calling Merritt Graphics at 800.344.4477 and requesting an order form.

Adobe Acrobat reader may be required to view some of this information. If you do not have this software you may download it for free from Adobe. A link to the Adobe site is provided on the internet bid page.

Businesses without internet access equipment, may contact the Procurement Services Department at 860.757.9610 for any Bid information. Our fax number is 860.722.6607.

A MANDATORY PRE-BID Conference will be held on Tuesday, May 5, 2009 at 11:00 A.M at Fire House, Engine Company No. 14, located at 25 Blue Hills Avenue, Hartford, CT. All prospective Bidders are requested to meet at the front of the Fire House. Bidding Contractors are required to attend this pre-bid conference. Contact Bruce Buff at 757-9604 for further information.

Bidders will be required to provide:

- . **10%** bid bond, cashier's or certified check with your response (see Standard Instructions). NOTE: The City of Hartford is now providing contractors with the option of submitting an electronic Bid Bond through the Surety2000 website.

Surety 2000 is an Internet-based surety processing, verification and security system, developed in cooperation with the surety industry. Contractors and Surety Agents may contact Surety 2000 at: 1-800-660-3263 or by going to www.surety2000.com for more information.

- . Performance, and payment bonds for 100% of the project upon award if the contract value exceeds \$50,000.00 (see Standard Instructions).
- . Copies of current Federal, State and City certifications as applicable.

SPECIAL NOTES:

- A. Questions related to this project must be received in writing 72 hours in advance of the response submittal deadline. We strongly recommend that prospective Candidates review specifications early in the solicitation process and submit all questions at one time. Written questions are to be sent to the buyer whose name appears on the invitation via email.
- B. A Bidder, as a condition of receiving the award of this contract, will be required to comply with Chapter 2, Article X, (Equal Employment Opportunity) of the Municipal Code and the "Greater Hartford Affirmative Action Plan".
- C. A delinquent tax status will be considered in determining whether a Bidder is responsible.
- D. A Bidder receiving an award will be required to provide proof of Its current standing with the Connecticut Secretary of State's Office (see Response Section, Bidder's Qualifications).
- E. The DAS Contractor Prequalification Program (Public Act 03-2 15) requires all contractors to prequalify "before they can bid on any construction, alteration, remodeling, repair or demolition of any public building (does not apply to road construction), for work by the state or a municipality, estimated to cost more than \$500,000 and which is funded in whole or in part with state funds. This project is subject to the state prequalification provisions if indicated in the "Construction Contract Summary Sheet" located at the front of this document. Information and application forms related to this program are located on the internet at: <http://www.das.state.ct.us/Business Svs/PreQual/Prequal .asp>.

PLAN HOLDERS LISTS are available from Merritt Graphics' PlanWell site locates at <http://www.merrittgraphics.com/>. Lists of Bidders having picked up bid documents will not be provided over the phone.

If, after review of the bid documents, your firm is interested in performing the services specified, provide the information and documentation requested, sign and return the complete document, along with your detailed response, to Procurement Services by the due date. We would appreciate the courtesy of promptly advising us if you do not intend to respond.

Sincerely,

Mark C. Turcotte
Procurement Manager

CONSTRUCTION PROJECT SUMMARY SHEET

RFR NUMBER:	BIDNO: 4421
CONTRACT NUMBER	F03-09D
BID TITLE :	FIRE HOUSE IMPROVEMENTS, PHASE III, ENGINE COMPANY NO. 14

ESTIMATED CONSTRUCTION COST: \$425,000

CONTRACT TYPE: OPEN COMPETITIVE WITH W/MBE % GOAL

SMALL MINORITY BUSINESS ENTERPRISE SET ASIDE

SMALL CONTRACTOR SET ASIDE

STATE OF CONNECTICUT PREQUALIFICATION REQUIRED: YES NO

PERCENTAGE OF MBE/WBE PARTICIPATION REQUIRED: **15%**

FEDERAL WAGE RATE REQUIREMENTS: YES NO

STATE WAGE RATE REQUIREMENTS: YES NO

HARTFORD BASED BIDDER ADVANTAGE: APPLICABLE NON-APPLICABLE

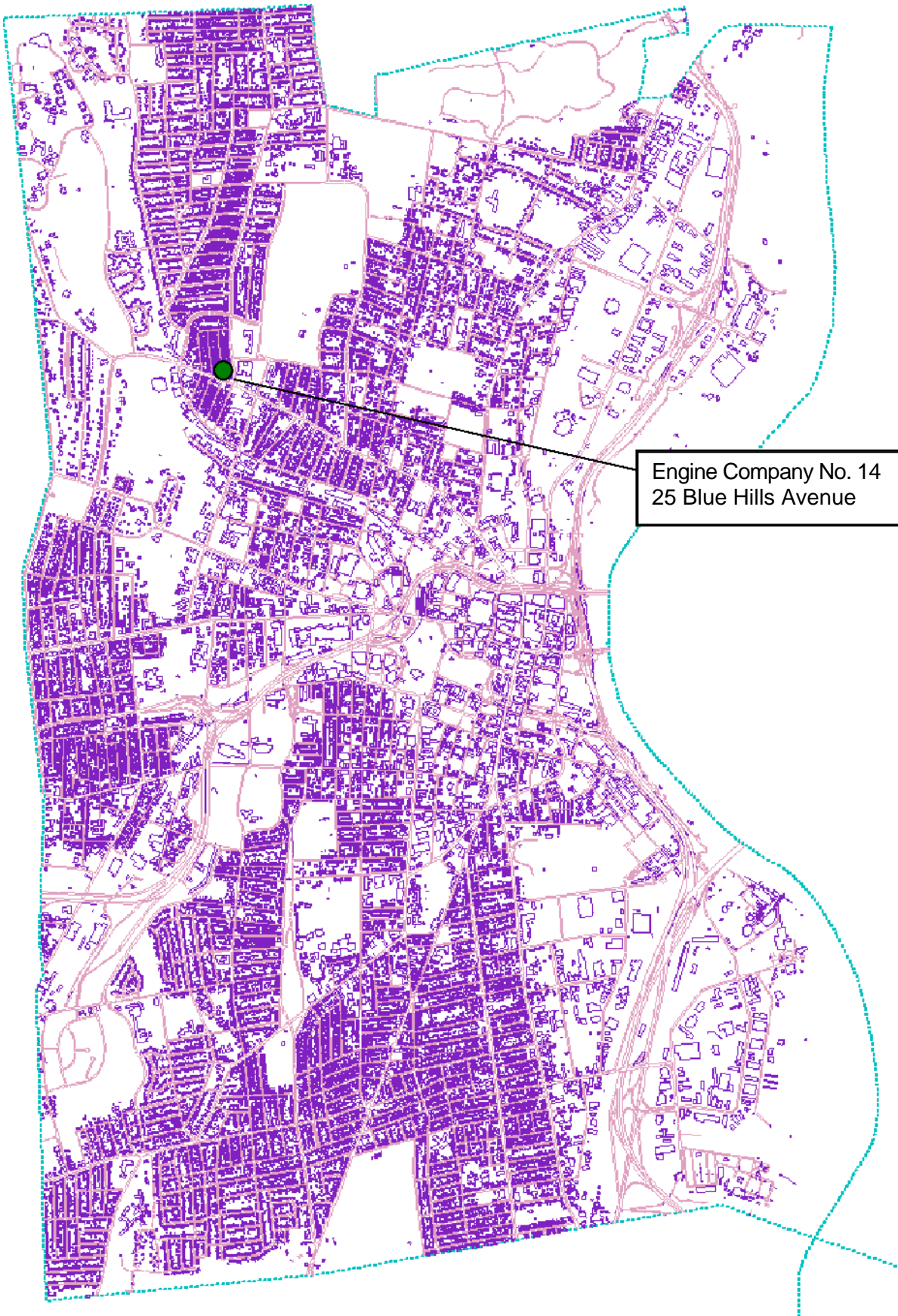
PLANS AVAILABLE AS PART OF BID DOCUMENTS: YES NO

SPECIAL INSURANCE REQUIREMENTS: YES NO

CALENDAR DAYS ALLOWED FOR CONTRACT WORK: **See Spec Section 011000**

LIQUIDATED DAMAGES FOR LATE COMPLETION: **\$1,000 PER DAY**

DISCLAIMER: THIS SHEET IS PROVIDED FOR GENERAL INFORMATION ONLY AND IS SOLELY INTENDED TO ASSIST BIDDERS IN UNDERSTANDING THE GENERAL SCOPE OF WORK. BIDDERS MUST REFER TO SPECIFIC CONTRACT SECTIONS FOR DETAILS. IN THE EVENT OF A CONFLICT, THE PROJECT AND CONTRACT SPECIFICATIONS SHALL TAKE PRECEDENCE OVER THIS CONTRACT SUMMARY SHEET.



Engine Company No. 14
25 Blue Hills Avenue

TABLE OF CONTENTS

RFR NUMBER:	BIDNO: 4421
CONTRACT NUMBER	F03-09D
BID TITLE :	FIREHOUSE IMPROVEMENTS, PHASE III, ENGINE COMPANY NO. 14

Award Letter (Inserted later as part of Contracting process)

1 – INVITATION TO RESPOND AND GENERAL INFORMATION

Title Page (Front Cover)	1
Invitation to Respond	2
Construction Project Summary Sheet	1
Project Site Location(s)	1
Table of Contents	3
List of Contract Drawings	1

2 – ADDENDA

3 – CONTRACTOR’S BID

3.0	Cover and Response Check List	1
3.1	Response Signature Form	1
3.2	Response Pricing	1
3.3	Statement of Qualifications	2
3.4	Subcontractor Information Forms	4
3.5	Bidder’s EEO Status and Report	1
3.6	Contractor’s Bid Bond	
3.7	EEO and W/MBE Certification Letters	

4 - THE CONTRACT

Sample Form of Contract, AIA 101 – 2007 Standard Form of Agreement between Owner and Contractor where the basis of payment is a Stipulated Sum	7
---	---

5 - THE GENERAL CONDITIONS

Sample Form of General Conditions, AIA 201 – 2007 General Conditions of the Contract for Construction	41
--	----

Sample Performance and Payment Bond, AIA 312 – 1984 Performance <u>B o n d a n d P a y m e n t B o n d</u>	7
---	---

6 – SAMPLE FORMS

<u>Sample Bid Bond</u>	1
------------------------	---

Wage & Payroll Requirements	
Wage Rates	27

Contractor's EEO Report	2
Contractor's Wage Certification Form	1
EEO / Affirmative Action Requirements Certificate	3
EEO Policy Statement	1
Certificate of Non-segregated Facilities	1
Affidavit – Signatory to Greater Hartford Affirmative Action Plan	1
Notification of Job Openings During Project	1
About Compliance Reports	1
Monthly Workforce Utilization Report	1
Monthly M/WBE Payment Status Report	1
Final M/WBE Payment Status Report	1
Payroll Certification Form	1

7 - TECHNICAL SPECIFICATIONS

	9
--	---

Technical Specifications			
Division 1 – General Requirements			
	Section 011000	Summary	4
	Section 012100	Allowances	2
	Section 012300	Alternates	1
	Section 012600	Contract Modification Procedures	2
	Section 012900	Payment Procedures	3
	Section 013100	Project Management and Coordination	6
	Section 013200	Construction Progress Documentation	4
	Section 013300	Submittal Procedures	4
	Section 014000	Quality Requirements	4
	Section 016000	Product Requirements	4

Section 017300	Execution	5
Section 017329	Cutting and Patching	3
Section 017419	Construction Waste Management and Disposal	4
Section 017700	Closeout Procedures	4
Section 017823	Operation and Maintenance Data	5
Section 017839	Project Record Documents	3
Section 017900	Demonstration and Training	4
Division 2 – Existing Conditions		
Section 024100	Survey for Asbestos Containing Materials and Lead Based	49
Division 5 – Metals		
Section 054000	Cold-Formed Metal Framing	7
Division 6 – Wood, Plastics and Composites		
Section 061053	Miscellaneous Rough Carpentry	4
Section 064023	Interior Architectural Woodwork	6
Division 7 – Thermal and Moisture Protection		
Section 073113	Asphalt Shingles	4
Section 074219	Metal Plate Wall Panels	6
Section 075323	Ethylene-Propylene-Diene Monomer (EPDM) Roofing	7
Section 076200	Sheet Metal Flashing and Trim	6
Section 079200	Joint Sealants	6
Division 8 – Openings		
Section 081113	Hollow Metal Doors and Frames	7
Section 086200	Unit Skylights	5
Division 9 – Finishes		
Section 092900	Gypsum Board	5
Section 095113	Acoustical Panel Ceilings	6
Section 099123	Painting	6
Division 10 – Specialties		
Section 102113	Toilet Compartments	3
Division 11 – Equipment		
Section 114000	Food Service	29
Division 12 – Furnishings		
Section 122413	Roller Window Shades	4

8 - GENERAL INFORMATION FOR PREPARATION OF A RESPONSE

8.1 How To Respond:
8.2 Correction or Withdrawal of Bids; Cancellation of Awards
8.3. Quantities And/Or Usages
8.4. Questions & Addenda
8.5 Criteria for Award
8.6. Qualifications of Candidates offering a Response
8.7 The Request for Response (RFR) Process
8.8. Contracting
8.9. Contract Documents
8.10. Obligations of the Candidate
8.11. Required Forms
8.12. Site Inspection
8.13. Prevailing Wages
8.14. Retainage
8.15. Acceptable Brands
8.16. Samples
8.17. Response Development
8.18. Registering with the Secretary of State
8.19. Time Provisions
8.20. Performance Bond and Labor & Material Bond
8.21. Insurance
8.22. Performance Evaluation
8.23. Subcontractor's
8.24. Women/Minority Business Utilization (W/MBE)
8.25. Equal Employment Opportunity/Affirmative Action Requirements
8.26. EEO/Affirmative Action Report
8.27. Hartford Based Bidder Advantage

9 - LIST OF DRAWINGS

SHEET NUMBER		TITLE
Cover	1 of 12	Cover Sheet
A-1	2 of 12	Site Plan, Floor Plans, Schedules & Details
A-2	3 of 12	Reflected Ceiling Plan & Interior Elevations
A-3	4 of 12	Roof Plan & Roof Framing Plan
A-4	5 of 12	Exterior Elevations
A-5	6 of 12	Sections & Details
A-6	7 of 12	Details